

Алматы (7273)495-231  
Ангарск (3955)60-70-56  
Архангельск (8182)63-90-72  
Астрахань (8512)99-46-04  
Барнаул (3852)73-04-60  
Белгород (4722)40-23-64  
Благовещенск (4162)22-76-07  
Брянск (4832)59-03-52  
Владивосток (423)249-28-31  
Владикавказ (8672)28-90-48  
Владимир (4922)49-43-18  
Волгоград (844)278-03-48  
Вологда (8172)26-41-59  
Воронеж (473)204-51-73  
Екатеринбург (343)384-55-89

Иваново (4932)77-34-06  
Ижевск (3412)26-03-58  
Иркутск (395)279-98-46  
Казань (843)206-01-48  
Калининград (4012)72-03-81  
Калуга (4842)92-23-67  
Кемерово (3842)65-04-62  
Киров (8332)68-02-04  
Коломна (4966)23-41-49  
Кострома (4942)77-07-48  
Краснодар (861)203-40-90  
Красноярск (391)204-63-61  
Курск (4712)77-13-04  
Курган (3522)50-90-47  
Липецк (4742)52-20-81  
Россия +7(495)268-04-70

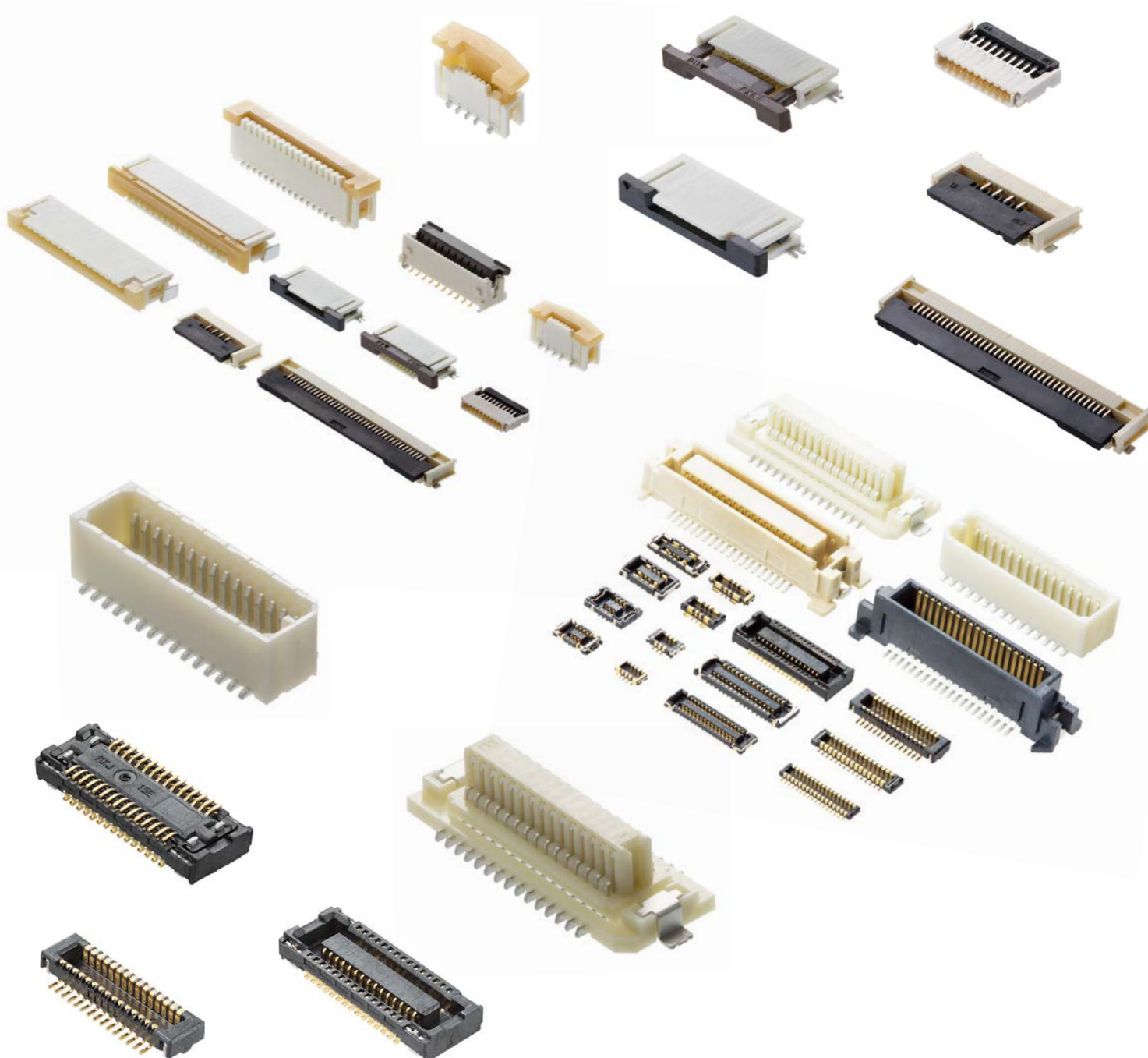
Магнитогорск (3519)55-03-13  
Москва (495)268-04-70  
Мурманск (8152)59-64-93  
Набережные Челны (8552)20-53-41  
Нижний Новгород (831)429-08-12  
Новокузнецк (3843)20-46-81  
Ноябрьск (3496)41-32-12  
Новосибирск (383)227-86-73  
Омск (3812)21-46-40  
Орел (4862)44-53-42  
Оренбург (3532)37-68-04  
Пенза (8412)22-31-16  
Петрозаводск (8142)55-98-37  
Псков (8112)59-10-37  
Пермь (342)205-81-47  
Казахстан +7(7172)727-132

Ростов-на-Дону (863)308-18-15  
Рязань (4912)46-61-64  
Самара (846)206-03-16  
Санкт-Петербург (812)309-46-40  
Саратов (845)249-38-78  
Севастополь (8692)22-31-93  
Саранск (8342)22-96-24  
Симферополь (3652)67-13-56  
Смоленск (4812)29-41-54  
Сочи (862)225-72-31  
Ставрополь (8652)20-65-13  
Сургут (3462)77-98-35  
Сыктывкар (8212)25-95-17  
Тамбов (4752)50-40-97  
Тверь (4822)63-31-35  
Киргизия +996(312)96-26-47

Тольятти (8482)63-91-07  
Томск (3822)98-41-53  
Тула (4872)33-79-87  
Тюмень (3452)66-21-18  
Ульяновск (8422)24-23-59  
Улан-Удэ (3012)59-97-51  
Уфа (347)229-48-12  
Хабаровск (4212)92-98-04  
Чебоксары (8352)28-53-07  
Челябинск (351)202-03-61  
Череповец (8202)49-02-64  
Чита (3022)38-34-83  
Якутск (4112)23-90-97  
Ярославль (4852)69-52-93

<https://molex.nt-rt.ru/> || [mxd@nt-rt.ru](mailto:mxd@nt-rt.ru)

# Micro Products Easy-On FFC/FPC Connectors and SlimStack Board-to-Board Connectors > Reference Guide



**molex**

# Easy-On FFC/FPC Connectors Core Products

---

|  |         |
|--|---------|
| List of Easy-On FFC/FPC Connectors Core Products .....   | 4       |
| Product Schematic Diagrams and Application Examples of<br>Easy-On FFC/FPC Connectors Core Products ..... | 5       |
| Easy-On FFC/FPC Connectors FBH1 Series .....   | 6 • 7   |
| Easy-On FFC/FPC Connectors FD19 Series .....   | 8 • 9   |
| Easy-On FFC/FPC Connectors Slider Series .....   | 10 • 11 |
| Easy-On FFC/FPC Connectors V-Flip Series .....   | 12 • 13 |



# SlimStack Board-to-Board Connectors Core Products

---

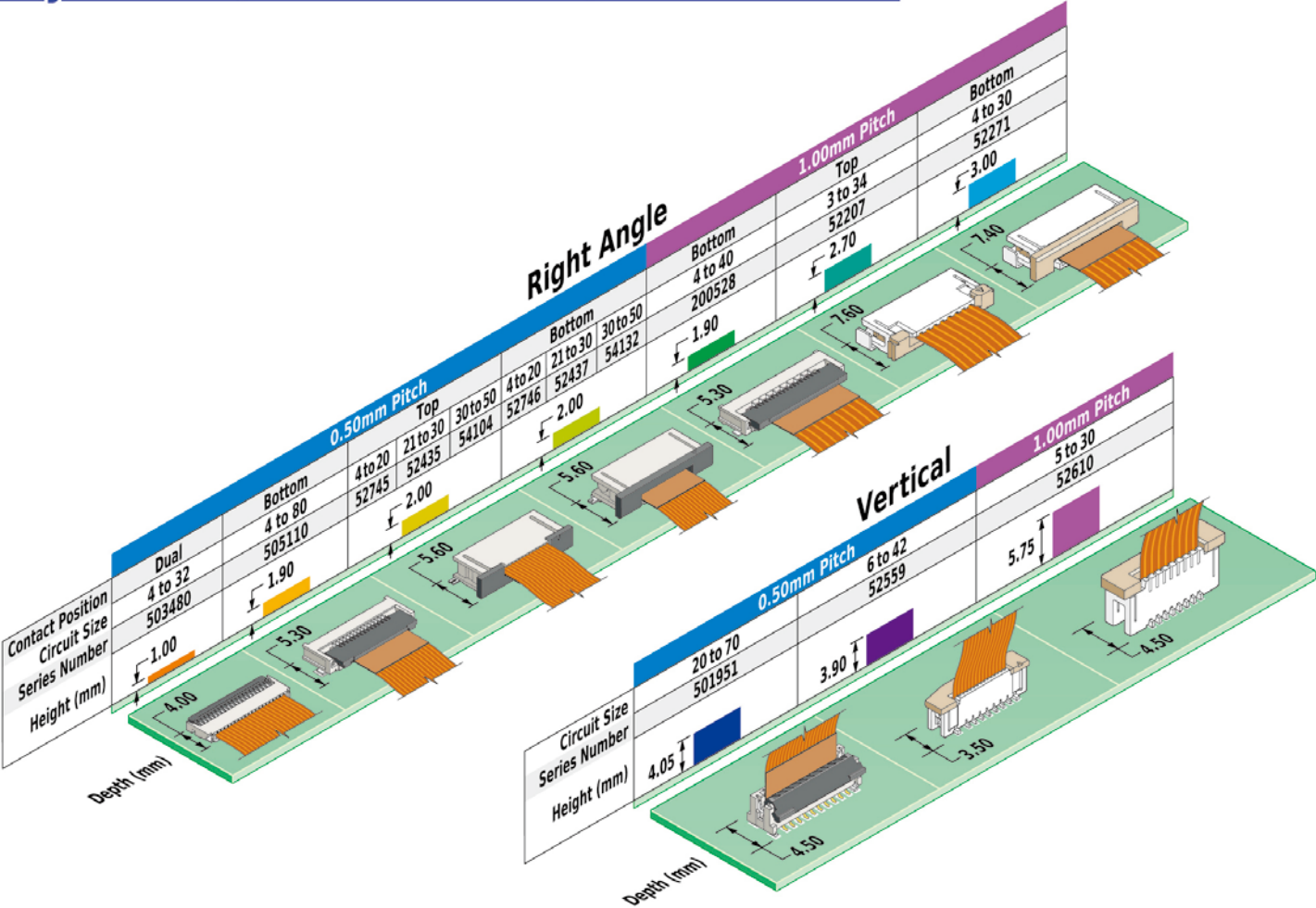
|  |         |
|--|---------|
| List of SlimStack Board-to-Board Connectors Core Products.....   | 14      |
| Product Schematic Diagrams and Application Examples of<br>SlimStack Board-to-Board Connectors Core ..... | 15      |
| SlimStack Board-to-Board Connector 0.35 mm SSB6 Standard Series .....                                    | 16 • 17 |
| SlimStack Board-to-Board Connector 0.35 mm SSB RP Series .....   | 18 • 19 |
| SlimStack Board-to-Board Connector 0.40 mm & 0.80 mm Battery Series .....                                | 20 • 21 |
| SlimStack Board-to-Board Connector 0.40 mm HRF Series .....  | 22 • 23 |
| SlimStack Board-to-Board Connector 0.40 mm B8 Series .....   | 24 • 25 |
| SlimStack Board-to-Board Connector 0.40 mm J-Bend Series .....   | 26 • 27 |
| SlimStack Board-to-Board Connector 0.635 mm Series .....   | 28 • 29 |
| SlimStack Board-to-Board Connector 0.80 mm Floating Series .....   | 30 • 31 |



# Easy-On FFC/FPC Connectors Core Products

| Pitch (mm) | Orientation | Contact Position | Circuit Size | Series Number | Image   |
|------------|-------------|------------------|--------------|---------------|---|
| 0.50       | Right Angle | Dual             | 4 to 32      | 503480        |    |
|            |             | Bottom           | 4 to 80      | 505110        |    |
|            |             | Top              | 4 to 20      | 52745         |    |
|            |             |                  | 21 to 30     | 52435         |   |
|            |             |                  | 30 to 50     | 54104         |   |
|            |             | Bottom           | 4 to 20      | 52746         |    |
|            |             |                  | 21 to 30     | 52437         |   |
|            |             |                  | 30 to 50     | 54132         |   |
|            | Vertical    |                  | 20 to 70     | 501951        |   |
|            |             |                  | 6 to 42      | 52559         |  |
| 1.00       | Right Angle | Bottom           | 4 to 30      | 200528        |  |
|            |             | Top              | 3 to 34      | 52207         |  |
|            |             | Bottom           | 4 to 30      | 52271         |  |
|            | Vertical    |                  | 5 to 30      | 52610         |  |

# Easy-On FFC/FPC Connectors Core Products



## Application Examples



Automotive infotainment\*



Home appliances



Medical devices



POS terminals



IoT devices



Servers

\*For select products only



# Easy-On FFC/FPC Connectors, 0.50mm Pitch, FBH1 Series

Product 503480

**molex**

The Easy-On FFC/FPC Connectors, 0.50mm Pitch, FBH1 Series, with a low profile and user-friendly features, are ideal for consumer or commercial market applications of any design layout

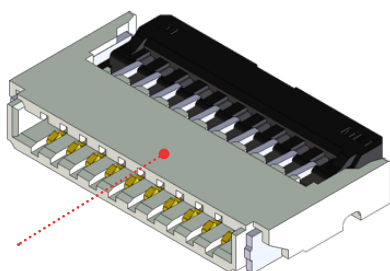


503480-00

## Features and Advantages

### Back Flip actuator

Eases cable insertion and allows for a high upward pull force

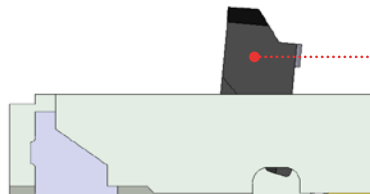


Low profile height of 1.00mm and width of 4.00mm

Offers space savings

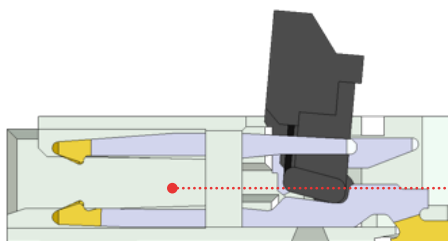
### Actuator rotation

Rotates 94° for easy operation and cable access



### Dual contact terminal

Delivers secure connectivity



## Applications

### Consumer

- POS terminals
- Game machines
- Digital still cameras
- Digital video cameras
- Car navigation systems
- Drones
- Consumer displays



POS



Drone



Game Machine

# Easy-On FFC/FPC Connectors, 0.50mm Pitch, FBH1 Series

Product 503480



Specifications

**REFERENCE INFORMATION**  
Packaging: Embossed Tape and reel  
Use With: FFC/FPC  
Designed In: Millimeters  
RoHS: Yes  
Halogen Free: Low-Halogen

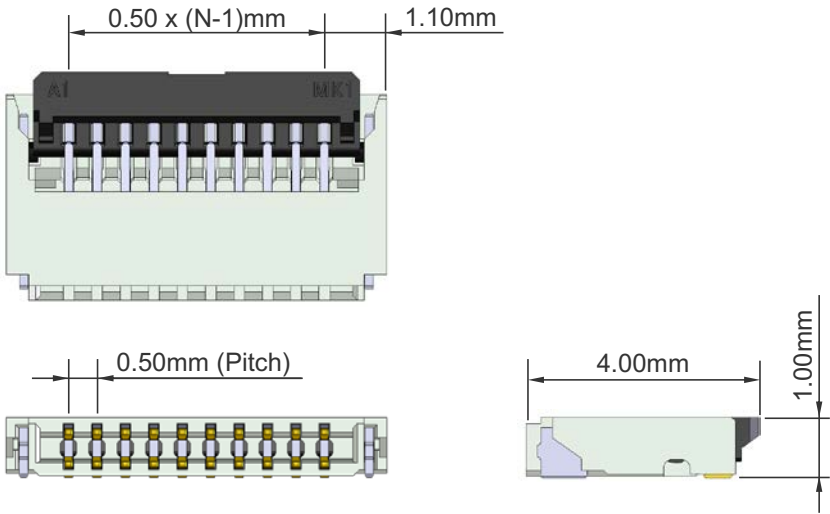
**ELECTRICAL**  
Voltage (max.): 50V  
Current (max.): 0.5A per circuit  
Contact Resistance (max.): 100 milliohms  
Dielectric Withstanding Voltage: 200V AC  
Insulation Resistance (min.): 50 Megaohms

**MECHANICAL**  
FFC/FPC Thickness: 0.30mm  
Durability (min.): 10 cycles

**PHYSICAL**  
Housing: LCP, UL 94V-0, Natural  
Actuator: PA, UL 94V-0, Black  
Contact: Copper Alloy  
Plating:  
Contact Area — Gold  
Solder Tail Area — Gold  
Underplating — Nickel  
Operating Temperature: -40 to +85°C

**CIRCUIT SIZES**  
4, 5, 6, 8, 10, 12, 14, 16, 17, 18  
20, 22, 24, 26, 30, 32, 36, 38, 40

N = Circuit size



Ordering Information

| Series No.  | Pitch  | Orientation | Contact Position | Circuits | Operating Temperature | Plating |
|-------------|--------|-------------|------------------|----------|-----------------------|---------|
| 503480-**00 | 0.50mm | Right-Angle | Dual             | 4 to 40  | -40 to +85°C          | Gold    |

Replace \*\* with circuit size

# Easy-On FFC/FPC Connector, 0.50/1.00mm pitch, FD19 Series

Product 505110 / 200528

**molex**

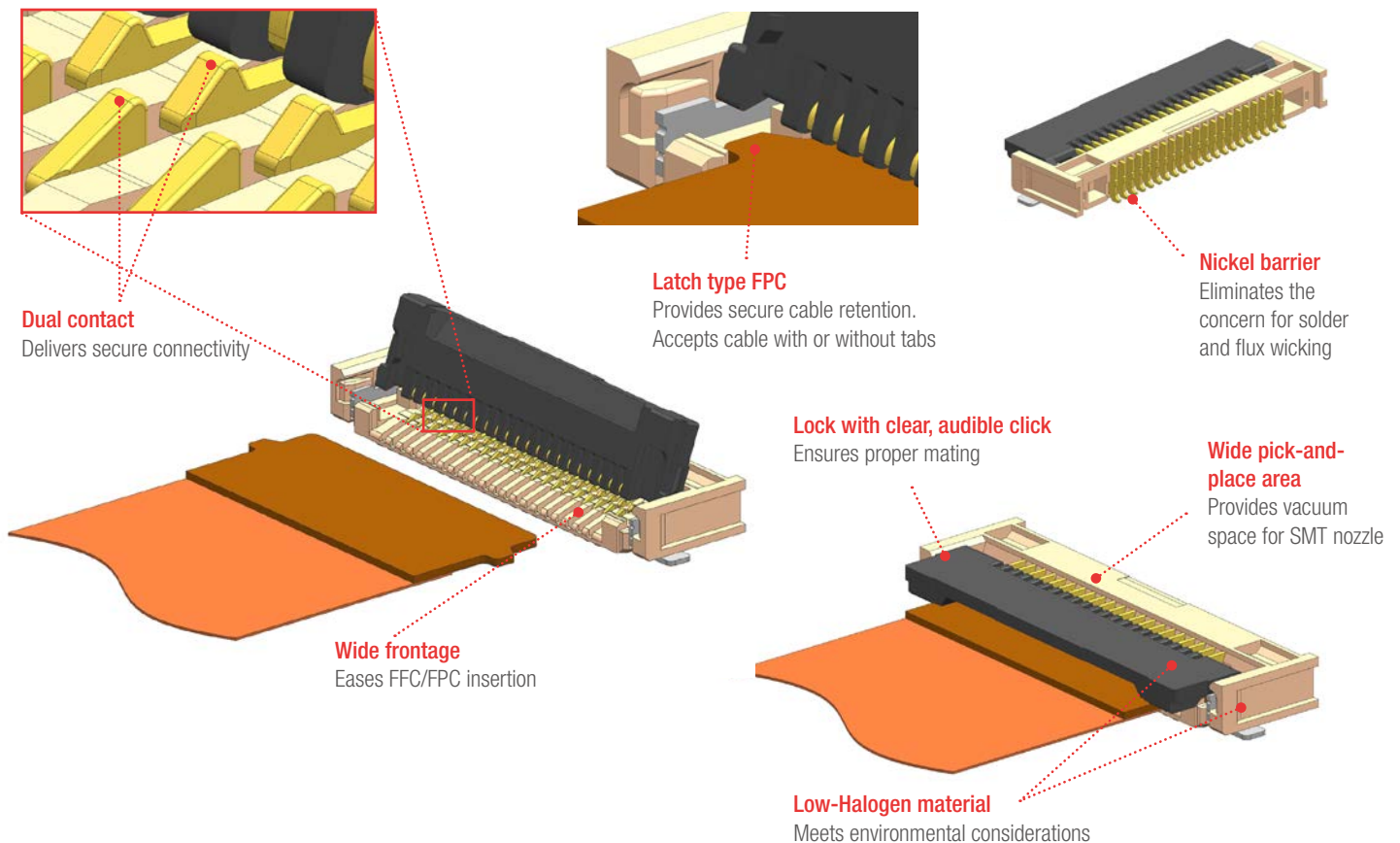
**Versatile dual-contact FD19 Series FFC/FPC Connectors meet temperature requirements up to 125°C and come in a wide range of circuit sizes for maximum design flexibility across multiple markets and applications**



505110-\*\*\*\*  
(0.50mm pitch)

200528-\*\*\*\*  
(1.00mm pitch)

## Features and Advantages



## Applications

### Automotive

- Car navigation
- Instrument panels
- Car infotainment

### Home Appliance

- Flat panel TVs
- Refrigerators
- Vacuuuming machines

### Industrial

- UAV (drone)
- Robotics

### Consumer

- Game units
- VR/AR
- Printers



Car Infotainment



Home Appliance



UAV (Drone)



# Easy-On FFC/FPC Connector, 0.50/1.00mm pitch, FD19 Series

Product 505110 / 200528

**molex**

## Specifications

### REFERENCE INFORMATION

Packaging: Embossed tape and reel  
Use with: FFC/FPC  
Designed in: Millimeters  
RoHS: Yes  
Halogen free: Low-Halogen

### ELECTRICAL

Voltage (max.): 50V  
Current (max.): 0.5A per circuit  
Contact Resistance (max.): 40 milliohms  
Dielectric Withstanding Voltage: 125V AC  
Insulation Resistance (min.): 50 Megohms

### MECHANICAL

FFC/FPC Thickness: 0.30mm  
Durability (max.): 20 cycles

### PHYSICAL

Housing: LCP, UL 94V-0, Beige  
Actuator: PA, UL 94V-0, Black  
Plating:  
Contact Area — Gold  
Solder Tail Area — Gold  
Underplating — Nickel  
Operating Temperature: -40 to +105°C  
or -40 to +125°C

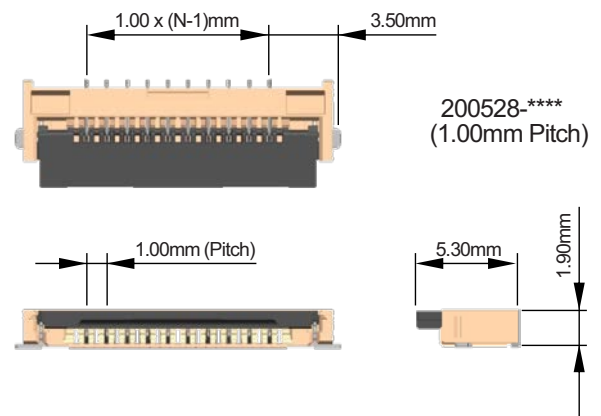
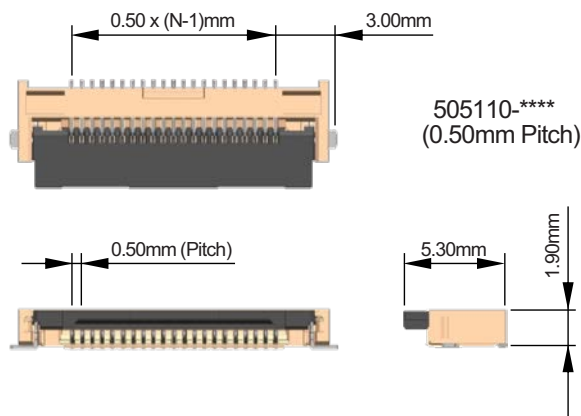
### CIRCUIT SIZE (0.50MM PITCH)

4, 5, 6, 7, 8, 9, 10, 11, 12, 13, 14, 15, 16, 17, 18,  
19, 20, 21, 22, 23, 24, 25, 26, 27, 28, 29, 30, 31,  
32, 33, 34, 35, 36, 37, 38, 39, 40, 41, 42, 43, 44,  
45, 46, 47, 48, 49, 50, 51, 52, 53, 54, 55, 56, 57,  
58, 59, 60, 61, 64, 68, 70, 80

### CIRCUIT SIZE (1.00MM PITCH)

4 to 30

N = Circuit size



## Ordering Information

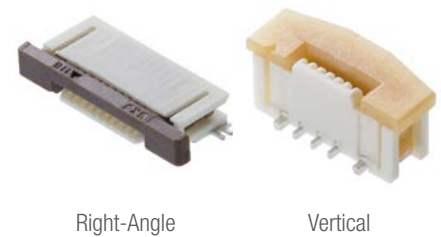
| Series No.  | Pitch (mm) | Orientation | Contact Position | Circuits | Operating Temperature | Plating |
|-------------|------------|-------------|------------------|----------|-----------------------|---------|
| 505110-**92 | 0.50       | Right-Angle | Bottom           | 4 to 19  | -40 to +105°C         | Gold    |
| 505110-**91 |            |             |                  | 20 to 80 | -40 to +105°C         |         |
| 505110-**97 |            |             |                  | 4 to 19  | -40 to +125°C         |         |
| 505110-**96 |            |             |                  | 20 to 80 | -40 to +125°C         |         |
| 200528-0**0 | 1.00       |             |                  | 4 to 30  | -40 to +105°C         |         |
| 200528-0**1 |            |             |                  | 4 to 30  | -40 to +125°C         |         |

Replace with \*\* for Circuit size.

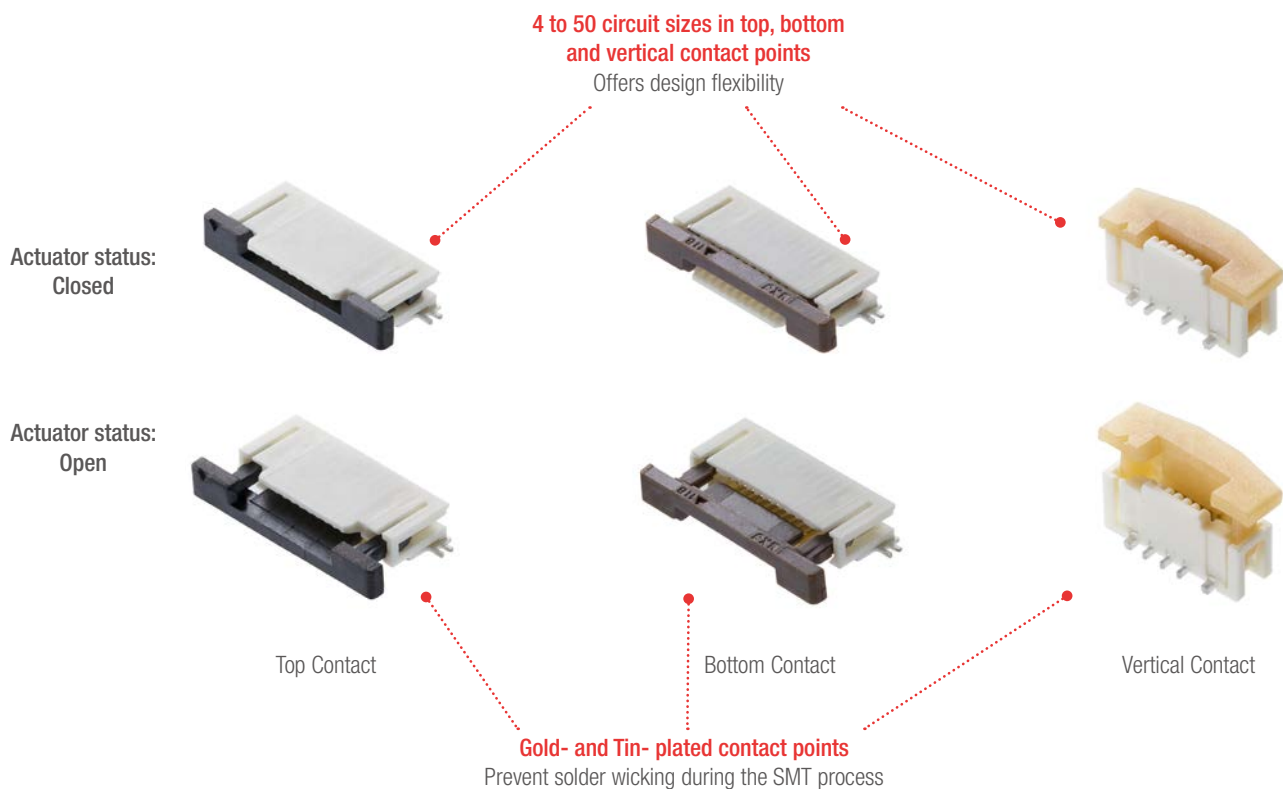
# Easy-On FFC/FPC Connectors, 0.50/1.00mm Pitch, Slider Series

**molex**

The Easy-On FFC/FPC Connectors, 0.50/1.00mm Pitch, Slider Series, with their market proven 'Slider' locking mechanism and wide circuit options in top, bottom and vertical contact variations, offer design flexibility for FFC/FPC cable routing applications



## Features and Advantages



## Applications

### Industry

- IoT interconnection devices
- Smart speakers
- UAVs (Drones)
- FA robots
- Security cameras

### Mobile

- POS terminals

### Consumers

- Home appliances

### Medical

- Patient monitoring
- MRI/CT machines
- Disposable inspection devices



POS terminal



Medical



IoT device

# Easy-On FFC/FPC Connectors, 0.50/1.00mm Pitch, Slider Series

**molex**

## Specifications

### REFERENCE INFORMATION

Packaging: Embossed Tape and Reel  
Use With: FFC/FPC  
Designed In: Millimeters  
RoHS: Yes

### ELECTRICAL

Voltage (max.): 50V  
Current (max.): 0.5A per circuit  
Contact Resistance (max.): 20 milliohms  
Dielectric Withstanding Voltage: 250V AC  
Insulation Resistance (min.): 50 Megohms

### MECHANICAL

FFC/FPC Thickness: 0.30mm  
Durability (max.): 20 cycles

### PHYSICAL

Housing: LCP, UL 94V-0  
Actuator: PA, UL 94V-0  
Contact: Copper Alloy  
Plating:  
Contact Area — Gold  
Solder Tail Area — Gold  
Underplating — Nickel  
Fitting Nail: Copper Alloy, Tin over Nickel plating  
Operating Temperature: -40 to +85°C

### CIRCUIT SIZES

4, 5, 6, 7, 8, 9, 10, 11, 12, 13, 14, 15, 16, 17, 18,  
19, 20, 21, 22, 23, 24, 25, 26, 27, 28, 29, 30, 31,  
32, 33, 34, 35, 36, 37, 38, 39, 40, 41, 42, 43, 44,  
45, 50

## Ordering Information

| Series No. | Pitch (mm) | Orientation | Contact Position | Circuits | Operating Temperature | Plating |
|------------|------------|-------------|------------------|----------|-----------------------|---------|
| 52745-**33 | 0.50       | Right-Angle | Top              | 4 to 20  | -40 to +85°C          | New Tin |
| 52745-**97 | 0.50       | Right-Angle | Top              | 4 to 20  | -40 to +85°C          | Gold    |
| 52746-**33 | 0.50       | Right-Angle | Bottom           | 4 to 20  | -40 to +85°C          | New Tin |
| 52746-**71 | 0.50       | Right-Angle | Bottom           | 4 to 20  | -40 to +85°C          | Gold    |
| 52435-**33 | 0.50       | Right-Angle | Top              | 21 to 30 | -40 to +85°C          | New Tin |
| 52435-**71 | 0.50       | Right-Angle | Top              | 21 to 30 | -40 to +85°C          | Gold    |
| 52437-**33 | 0.50       | Right-Angle | Bottom           | 21 to 30 | -40 to +85°C          | New Tin |
| 52437-**71 | 0.50       | Right-Angle | Bottom           | 21 to 30 | -40 to +85°C          | Gold    |
| 54104-**33 | 0.50       | Right-Angle | Top              | 30 to 50 | -40 to +85°C          | New Tin |
| 54104-**31 | 0.50       | Right-Angle | Top              | 30 to 50 | -40 to +85°C          | Gold    |
| 54132-**33 | 0.50       | Right-Angle | Bottom           | 30 to 50 | -40 to +85°C          | New Tin |
| 54132-**62 | 0.50       | Right-Angle | Bottom           | 30 to 50 | -40 to +85°C          | Gold    |
| 52559-**34 | 0.50       | Vertical    | Vertical         | 6 to 42  | -40 to +85°C          | New Tin |
| 52559-**52 | 0.50       | Vertical    | Vertical         | 6 to 42  | -40 to +85°C          | Gold    |
| 52207-**33 | 1.00       | Right-Angle | Top              | 3 to 34  | -40 to +85°C          | New Tin |
| 52207-**60 | 1.00       | Right-Angle | Top              | 3 to 34  | -40 to +85°C          | Gold    |
| 52271-**79 | 1.00       | Right-Angle | Bottom           | 4 to 30  | -40 to +85°C          | New Tin |
| 52271-**69 | 1.00       | Right-Angle | Bottom           | 4 to 30  | -40 to +85°C          | Gold    |
| 52610-**33 | 1.00       | Vertical    | Vertical         | 5 to 30  | -40 to +85°C          | New Tin |
| 52610-**72 | 1.00       | Vertical    | Vertical         | 5 to 30  | -40 to +85°C          | Gold    |

Replace \*\* with circuit size

# Easy-On FFC/FPC Connector, 0.50mm pitch, V-Flip Series

Product 501951

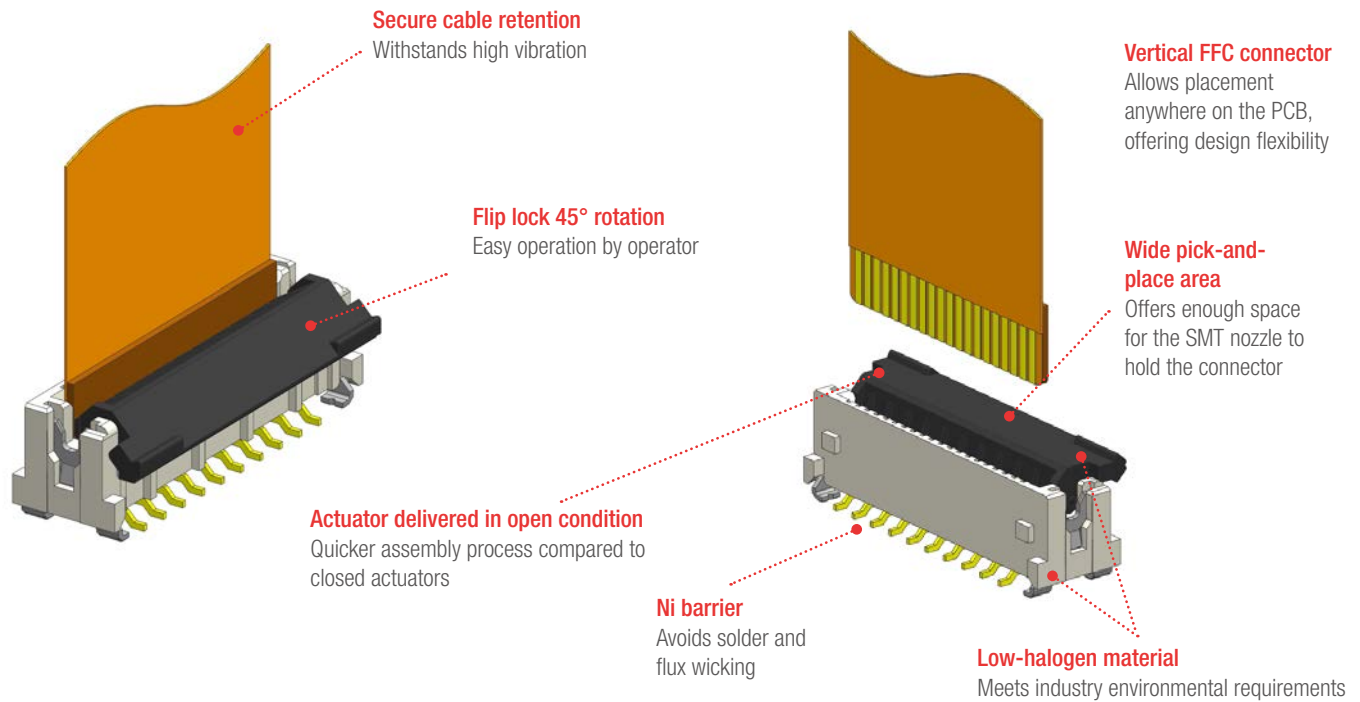
**molex**

Vertical Flip Connectors facilitate multiple SMT on PCB, and feature 4 to 70 circuit sizes, wide operating temperature of up to 125°C and a flip lock for secure locking

## Features and Advantages



501951-\*\*\*\*



## Applications

### Office Equipment

Printer

### Consumer

Home appliances

Flat TVs

### Industry

UAVs (drones)

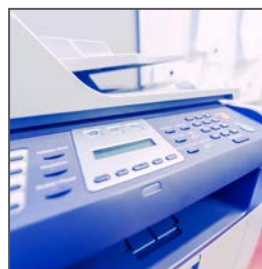
IoT interconnection devices

### Datacom

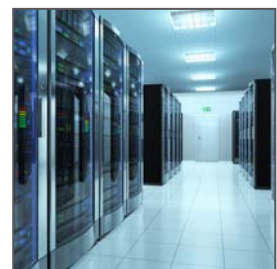
Servers

### Medical

Patient-monitoring systems



Office Equipment



Servers

# Easy-On FFC/FPC Connector, 0.50mm pitch, V-Flip Series

Product 501951



Specifications

REFERENCE INFORMATION

Packaging: Embossed Tape and Reel  
Use With: FFC/FPC  
Designed In: Millimeters  
RoHS: Yes  
Halogen Free: Low-Halogen

ELECTRICAL

Voltage (max.): 50V  
Current (max.): 0.5A per circuit  
Contact Resistance (max.): 40 milliohms  
Dielectric Withstanding Voltage: 250V AC  
Insulation Resistance (min.): 50 Megohms

MECHANICAL

FFC/FPC Thickness: 0.30mm  
Durability (max.): 20 cycles

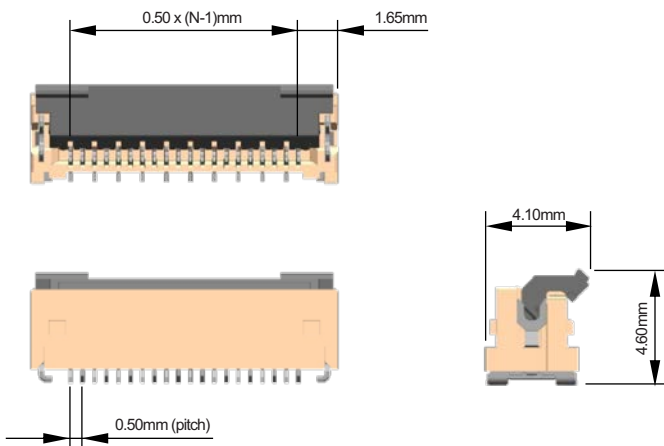
PHYSICAL

Housing: LCP, UL 94V-0, White  
Actuator: PA, UL 94V-0, Black  
Plating:  
Contact Area — Gold  
Solder Tail Area — Gold  
Underplating — Nickel  
Operating Temperature: -40 to +85°C or  
-40 to +125°C

4, 5, 6, 7, 8, 9, 10, 11, 12, 13, 14, 15, 16, 17, 18,  
19, 20, 21, 22, 23, 24, 25, 26, 27, 28, 29, 30, 31,  
32, 33, 34, 35, 36, 37, 38, 39, 40, 41, 42, 43, 44,  
45, 46, 47, 48, 49, 50, 51, 52, 53, 54, 55, 56, 57,  
58, 59, 60, 70

CIRCUIT SIZE

N = Circuit size



Ordering Information

| Series No.  | Pitch (mm) | Orientation | Contact Position | Circuits | Operating Temperature | Plating |
|-------------|------------|-------------|------------------|----------|-----------------------|---------|
| 501951-**30 | 0.50       | Vertical    | Vertical         | 4 to 70  | -40 to +85°C          | Gold    |
| 501951-**50 | 0.50       | Vertical    | Vertical         | 4 to 70  | -40 to +125°C         | Gold    |

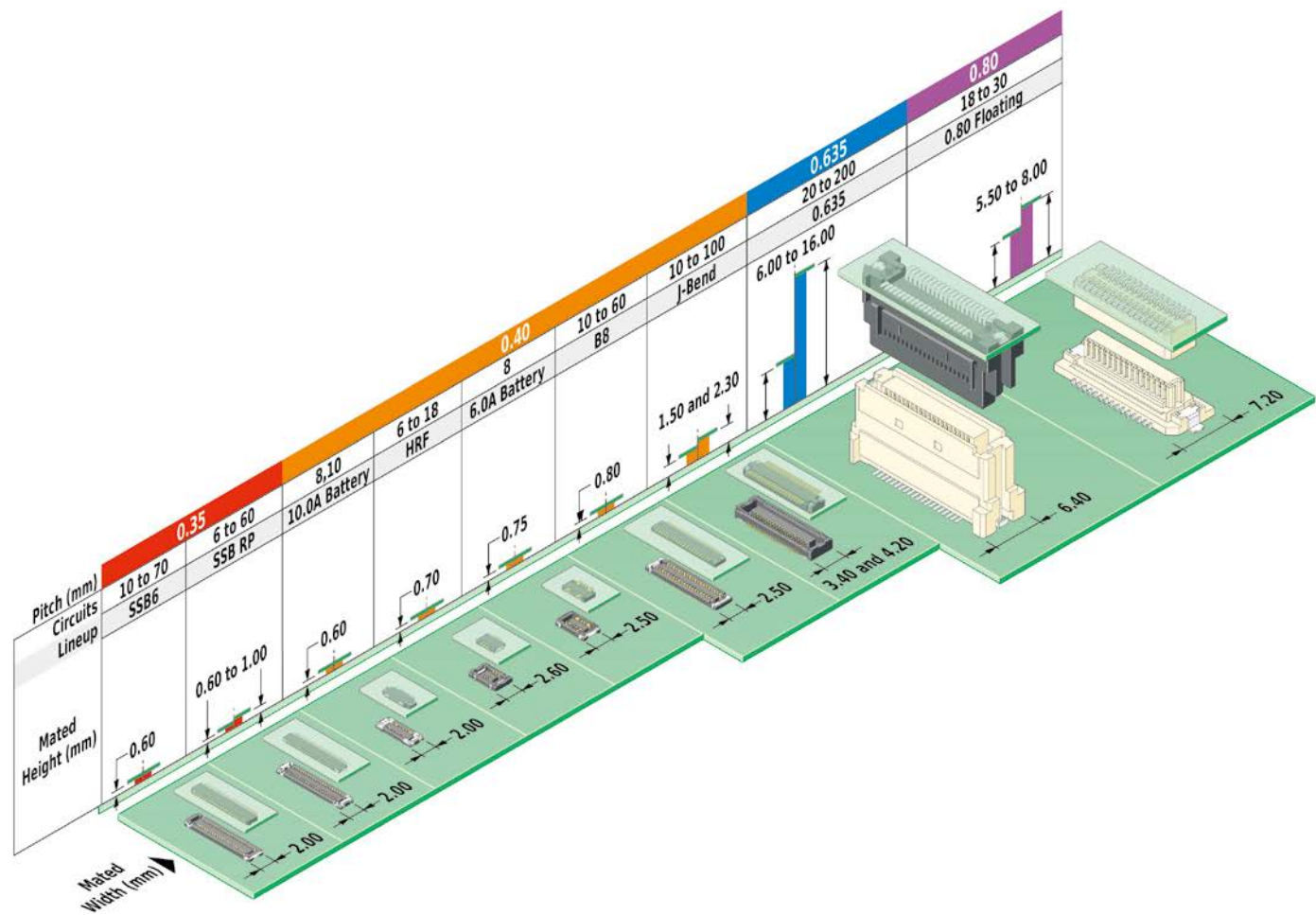
Replace \*\* with circuit size



# SlimStack Board-to-Board Connectors Core Products

| Pitch (mm) | Mated Height (mm) | Mated Width (mm) | Circuits  | Lineup        | Series Number |        | Image  |
|------------|-------------------|------------------|-----------|---------------|---------------|--------|--|
|            |                   |                  |           |               | Receptacle    | Plug   |  |
| 0.35       | 0.60              | 2.00             | 10 to 70  | SSB6          | 504618        | 504622 |                     |
|            | 0.60              | 2.00             | 6 to 60   | SSB RP        | 505066        | 505070 | <br>*POWER SUPPLY ⚡ |
|            | 0.70              |                  |           |               | 505270        |        |  |
|            | 0.80              |                  |           |               | 505413        |        |  |
|            | 0.90              |                  |           |               |               | 505417 |  |
|            | 1.00              |                  |           |               |               |        |  |
| 0.40       | 0.60              | 2.00             | 8, 10     | 10.0A Battery | 505473        | 505476 | <br>*POWER SUPPLY ⚡ |
|            | 0.70              | 2.60             | 6 to 18   | HRF           | 503548        | 503552 |                     |
|            | 0.75              | 2.50             | 8         | 6.0A Battery  | 505004        | 505006 | <br>*POWER SUPPLY ⚡ |
|            | 0.80              | 2.50             | 10 to 60  | B8            | 503772        | 503776 |                    |
|            |                   |                  |           |               | 505550        | 505551 |  |
|            | 1.50              | 3.40             | 10 to 100 | J-Bend        | 51338         | 55909  |                   |
|            | 1.80              | 4.20             |           |               | 500913        |        |  |
|            | 2.00              | 3.40             | 12 to 80  |               | 51338         | 501745 |                   |
|            | 2.30              | 4.20             |           |               | 500913        |        |  |
|            | 0.635             | 6.00             | 6.40      | 20 to 200     | 0.635         | 52885  | 55091  |
| 7.00       |                   | 53625            |           |               |               |        |  |
| 8.00       |                   | 53647            |           |               |               |        |  |
| 9.00       |                   | 53649            |           |               |               |        |  |
| 10.00      |                   | 53627            |           |               |               |        |  |
| 12.00      |                   | 52901            |           |               |               | 55091  |                   |
| 13.00      |                   |                  |           |               |               | 53625  |  |
| 14.00      |                   |                  |           |               |               | 53647  |  |
| 15.00      |                   |                  |           |               |               | 53649  |  |
| 16.00      |                   |                  |           |               |               | 53627  |  |
| 0.80       | 5.50              | 7.20             | 18 to 30  | 0.80 Floating | 52588         | 53307  |                   |
|            | 7.00              |                  |           |               |               | 53364  |  |
|            | 8.00              |                  |           |               |               | 53353  |  |

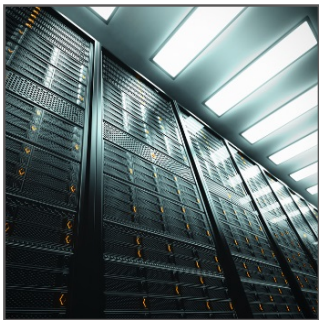
# SlimStack Board-to-Board Connectors Core Products



## Application Examples



Patient monitoring systems



Network servers



Office equipment



Portable navigation



Wearable devices



Automation machines

# SlimStack Board-to-Board Connectors, 0.35mm Pitch, SSB6 Standard Series

**molex**

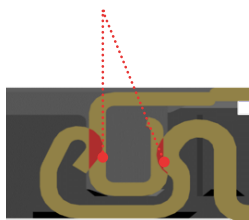
**0.35mm pitch connectors deliver up to 3.0A power through protective metal covers and provide superior mating guidance and electrical contact assurance.**

SSB6 Standard Series delivers design flexibility while meeting tight-packaging needs. As consumers continue to demand smaller devices, the need for microminiature designs grows. We can meet these low-profile needs with pitch sizes as small as 0.35mm, mated heights as low as 0.60mm and widths as narrow as 2.00mm.

## Features and Advantages

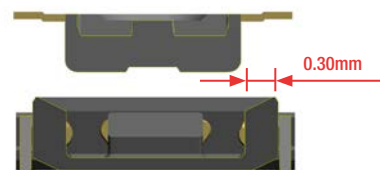
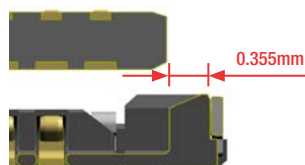
### Dual-Contact Design

Provides secure reliability



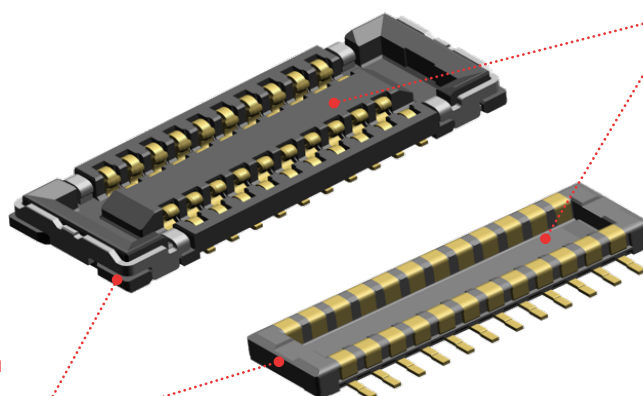
### Wide Alignment Area

Provides easy and secure mating



### Wide Pick-and-Place Area

Vacuum space for SMT nozzle



### Low-Halogen

Best material selection for environmental considerations

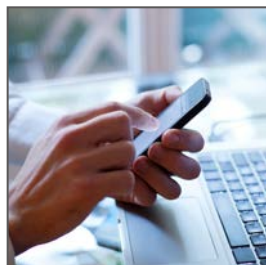
## Applications

### Mobile Devices

- Smartphones
- Tablet PCs
- Wearable Devices
- Portable Audio
- Portable Navigation Equipment

### Medical Devices

- Patient Monitoring
- Therapeutic and Surgical



Smartphone



Wearable Watch



Patient Monitoring

# SlimStack Board-to-Board Connectors, 0.35mm Pitch, SSB6 Standard Series



Specifications

REFERENCE INFORMATION

Packaging: Embossed Tape on Reel  
Designed In: Millimeters  
RoHS: Yes  
Halogen Free: Low-Halogen

ELECTRICAL

Voltage (max.): 50V  
Current (max.): 0.3A per circuit  
Contact Resistance (max.): 80 milliohms  
Dielectric Withstanding Voltage: 250V AC  
Insulation Resistance (min.): 100 Megohms

MECHANICAL

Durability (max.): 30 cycles

PHYSICAL

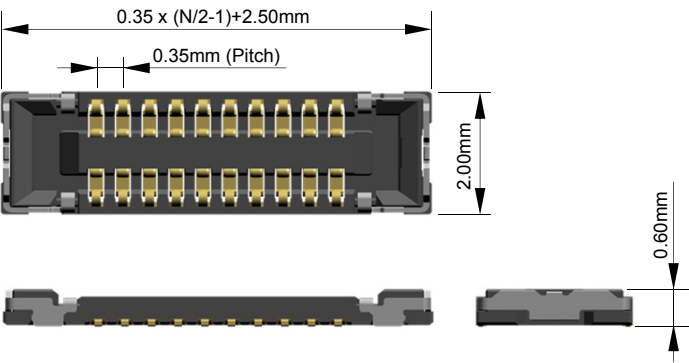
Housing: LCP, UL 94V-0, Black  
Contact: Copper Alloy  
Plating:  
    Contact Area – Gold  
    Solder Tail Area – Gold  
    Underplating – Nickel  
Operating Temperature: -40 to +85°C

Dimensions

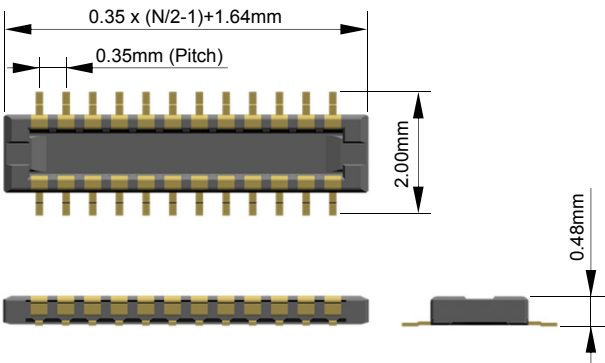
\* Refer to drawing for detail dimension

N: Circuit Size

Receptacle



Plug



Ordering Information

| Order No.   |             | Mated Height (mm) | Mated Width (mm) | Circuits                           |
|-------------|-------------|-------------------|------------------|------------------------------------|
| Receptacle  | Plug        |                   |                  |                                    |
| 504618-**12 | 504622-**12 | 0.60              | 2.00             | 10, 20, 24, 30, 34, 40, 50, 64, 70 |

\*\* : Circuit Size



# SlimStack Board-to-Board Connectors, 0.35mm Pitch, SSB RP Series

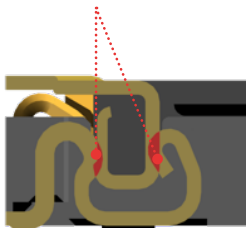


0.35mm pitch connectors deliver up to 3.0A power through protective metal covers and provide superior mating guidance and electrical contact assurance.

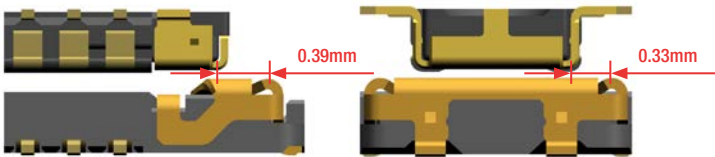
SSB RP Series delivers design flexibility while meeting tight-packaging needs with mated height variation, 0.60mm to 1.00mm, without having to redesign the PCB layout. As consumers continue to demand smaller devices, the need for microminiature designs grows.

## Features and Advantages

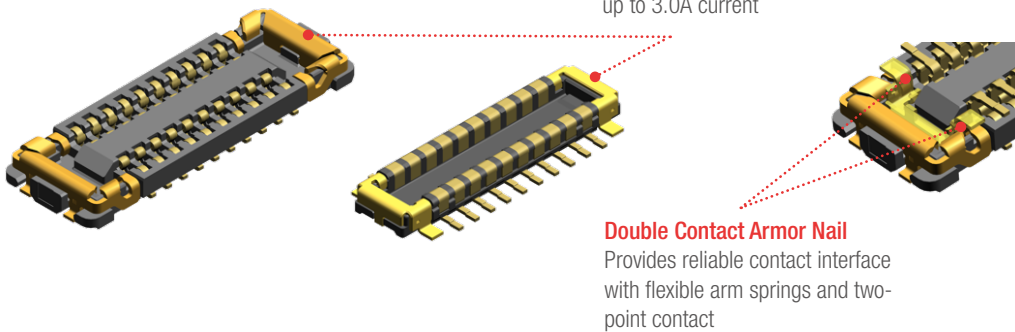
**Dual-Contact Design**  
Provides secure reliability



**Wide Alignment Area**  
Provides easy and secure mating



**Metal Power Armor Nail Feature**  
Provides housing protection with up to 3.0A current



**Double Contact Armor Nail**  
Provides reliable contact interface with flexible arm springs and two-point contact

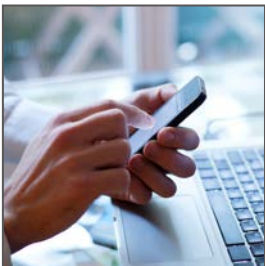
Customer can select stack height without having to redesign the PCB layout.

| Lineup Combination |            |        |
|--------------------|------------|--------|
| Mated Height (mm)  | Receptacle | Plug   |
| 0.60               | 505066     | 505070 |
| 0.70               | 505270     |        |
| 0.80               |            | 505274 |
| 0.90               |            |        |
| 1.00               | 505413     |        |

## Applications

- Mobile Devices**
  - Smartphones
  - Tablet PCs
  - Wearable Devices
  - Portable Audio
  - Portable Navigation Equipment

- Medical Devices**
  - Patient Monitoring
  - Therapeutic and Surgical



Smartphone



Wearable Watch



Patient Monitoring



# SlimStack Board-to-Board Connectors, 0.35mm Pitch, SSB RP Series



Specifications

REFERENCE INFORMATION

Packaging: Embossed Tape on Reel  
Designed In: Millimeters  
RoHS: Yes  
Halogen Free: Low-Halogen

ELECTRICAL

Voltage (max.): 50V  
Current (max.):  
Signal Contact: 0.3A per circuit  
Nail Contact: 3.0A per circuit  
Contact Resistance (max.):  
Signal Contact: 80 milliohms  
Nail Contact: 30 milliohms  
Dielectric Withstanding Voltage: 250V AC  
Insulation Resistance (min.): 100 Megohms

MECHANICAL

Durability (max.): 30 cycles

PHYSICAL

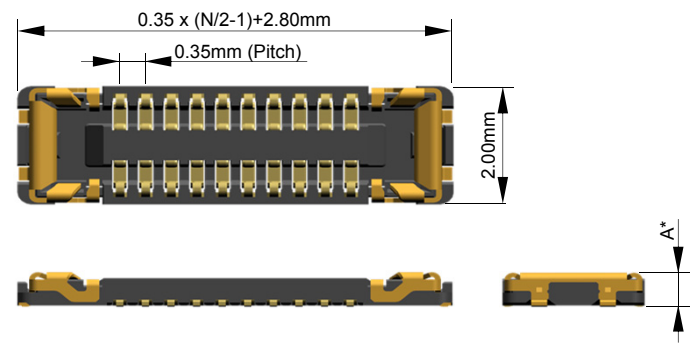
Housing: LCP, UL94V-0, Black  
Contact: Copper Alloy  
Plating:  
Contact Area – Gold  
Solder Tail Area – Gold  
Underplating – Nickel  
Operating Temperature: -40 to +85°C

Dimensions

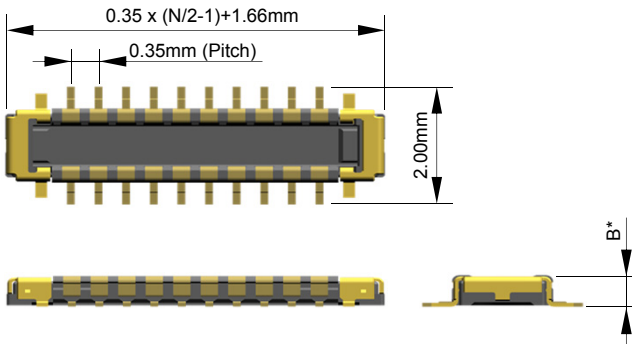
\* Refer to drawing for detail dimension

N: Circuit Size

Receptacle



Plug



Ordering Information

| Order No.   |             | Mated Height (mm) | Mated Width (mm) | Circuits   |
|-------------|-------------|-------------------|------------------|--|
| Receptacle  | Plug        |                   |                  |  |
| 505066-**22 | 505070-**22 | 0.60              | 2.00             | 6, 8, 10, 12, 14, 16, 20, 22, 24, 30, 34, 40, 42, 48, 50, 54 |
| 505270-**12 |             | 0.70              |                  | 6, 10, 16, 20, 22, 24, 30, 34, 40, 54                        |
|             | 505274-**12 | 0.80              |                  | 6, 10, 16, 20, 24, 30, 34, 40, 54                            |
| 505413-**10 |             | 0.90              |                  | 6, 30, 34, 40  |
|             | 505417-**10 | 1.00              |                  | 6, 30, 34, 40, 60  |

\*\* : circuit size

# SlimStack Board-to-Board Connectors, 0.40mm Pitch and 0.80mm Pitch, Battery Series

**molex**

**Achieve up to 10.0A of power and electrical reliability in an ultra-compact design with SlimStack Hybrid Power Connectors, designed for battery and other power applications.**

As consumers continue to demand smaller devices and bigger current value, the need for microminiature designs grows. Hybrid connectors deliver design flexibility while meeting tight-packaging needs.

## Features and Advantages

### Delivers up to 10.0A power

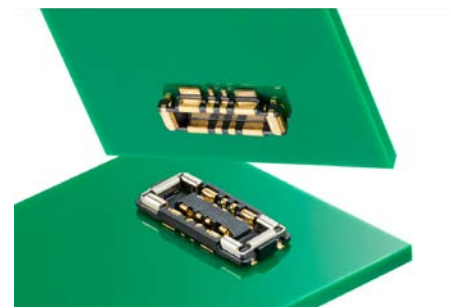
Meets the growing power needs of tight-packaging applications

### Dual-contact design for both power and signal contacts

Assures contact reliability

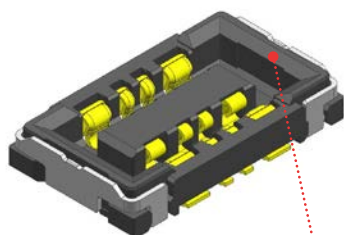
### Compact hybrid interface with power and signal contacts

Combines extra signal lines into power connector footprint for space savings

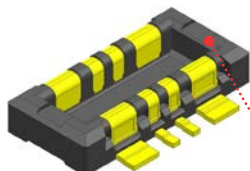


### Delivers up to 6.0A

Receptacle 505004 Series

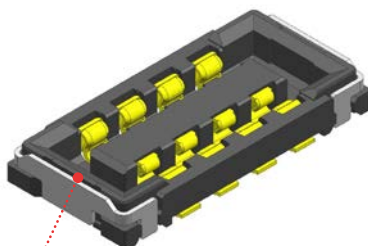


Plug 505006 Series

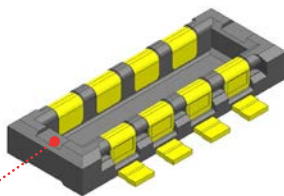


### Delivers up to 9.0A

Receptacle 104249 Series

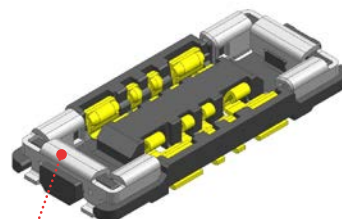


Plug 104250 Series



### Delivers up to 10.0A

Receptacle 505473 Series



Plug 505476 Series



**Wide Alignment Area**  
Provides easy and secure mating

**Armor Nail**  
Prevents damage to the housing

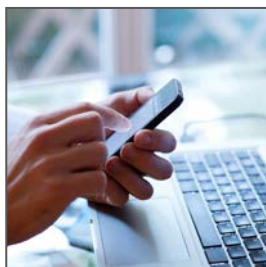
## Applications

### Mobile Devices

- Smartphones
- Tablet PCs
- Wearable Devices
- Portable Audio
- Portable Navigation Equipment

### Medical Devices

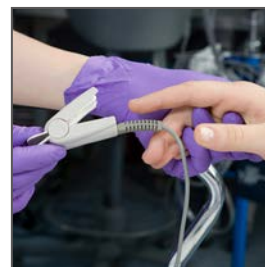
- Patient Monitoring
- Therapeutic and Surgical



Smartphone



Wearable Watch



Patient Monitoring

# SlimStack Board-to-Board Connectors, 0.40mm Pitch and 0.80mm Pitch, Battery Series



Specifications

REFERENCE INFORMATION

Packaging: Embossed Tape on Reel  
Designed In: Millimeters  
RoHS: Yes  
Halogen Free: Low-Halogen

ELECTRICAL

Voltage (max.): 50V  
Current (max.):  
505004/505006  
Signal Contact: 0.3A per circuit  
Power Contact: 3.0A per circuit  
104249/104250  
Signal Contact: 0.3A per circuit  
Power Contact: 4.5A per circuit  
505473/505476  
Signal Contact: 0.5A per circuit  
Power Contact: 5.0A\* per circuit

ELECTRICAL

Contact Resistance (max.):  
505004/505006  
Signal Contact: 80 milliohms  
Power Contact: 10 milliohms  
104249/104250  
10 milliohms  
505473/505476  
Signal Contact: 60 milliohms  
Power Contact: 10 milliohms  
Dielectric Withstanding Voltage: 250V AC  
Insulation Resistance (min.): 100 Megohms

MECHANICAL

Durability (max.): 10 cycles

PHYSICAL

Housing: LCP, UL94V-0, Black  
Contact: Copper Alloy  
Plating:  
Contact Area – Gold  
Solder Tail Area – Gold  
Underplating – Nickel  
Operating Temperature: -40 to +85°C

Dimensions

Refer to drawing for detail dimension

Ordering Information

| Order No.   |             | Mated Height (mm) | Mated Width (mm) | Circuits               | Metal Armor Housing Cover | Current |
|-------------|-------------|-------------------|------------------|------------------------|---------------------------|---------|
| Receptacle  | Plug        |                   |                  |                        |                           |         |
| 505473-0810 | 505476-0810 | 0.60              | 2.00             | 8 (4 power; 4 signal)  | Yes                       | 10.0A*  |
| 505473-1010 | 505476-1010 |                   |                  | 10 (4 power; 6 signal) |                           |         |
| 505004-0812 | 505006-0812 | 0.75              | 2.50             | 8 (4 power; 4 signal)  | No                        | 6.0A*   |
| 104249-0810 | 104250-0820 |                   |                  | 8 (power or signal)    |                           | 9.0A*   |

\*10.0A of current per circuit is applicable if the circuit was constructed by two power circuits via a PWB/FPC circuit.  
The same applies for the 6.0A and 9.0A versions.

# SlimStack Board-to-Board Connectors, 0.40mm Pitch, HRF Series

**molex**

**SlimStack Board-to-Board 0.40mm-Pitch High Retention Force (HRF) Series Connectors offer high mating-retention force in a triple-lock low-profile design, making them ideal for rugged and compact applications**

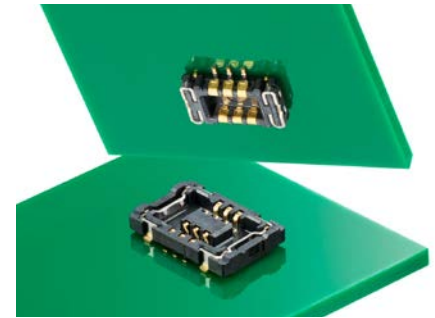
## Features and Advantages

### High mating-retention

Provides superior mating reliability for applications subject to high vibration or rugged conditions

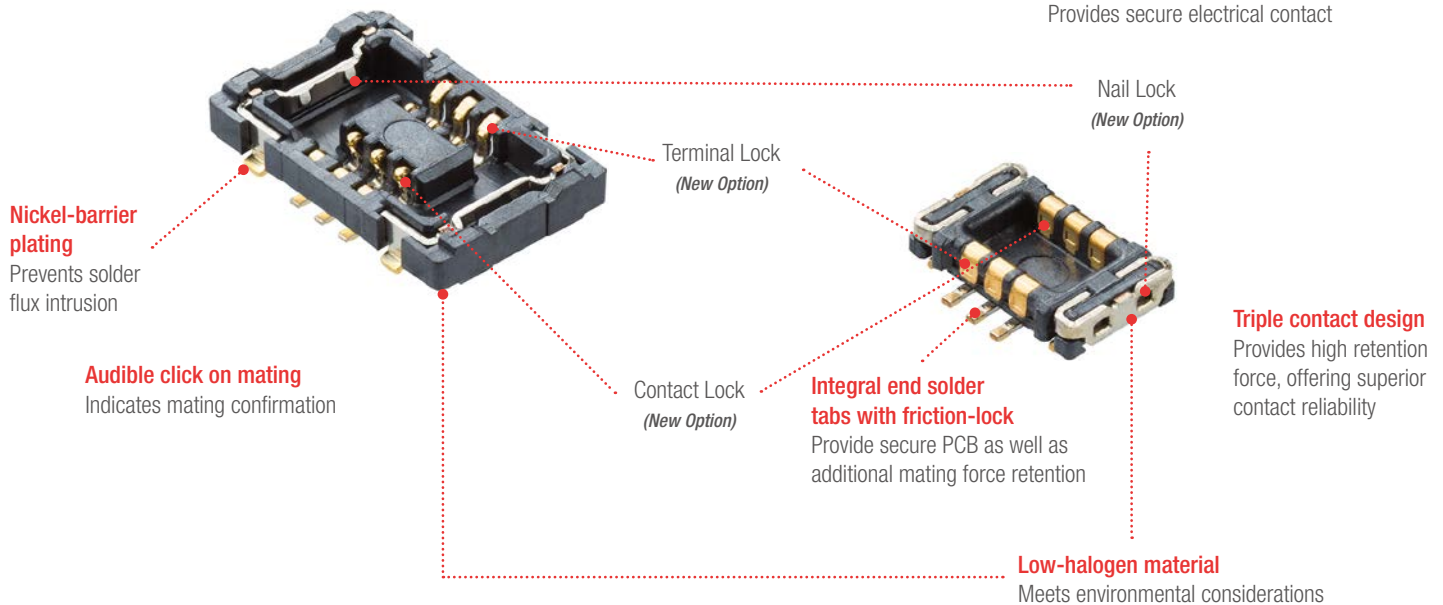
### Narrow width, low profile and small pitch

Yields space savings for mobile and compact applications



### Dual-contact terminal design

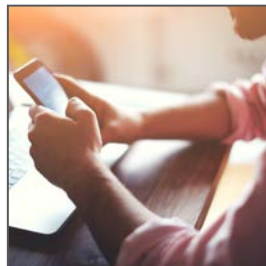
Provides secure electrical contact



## Applications

### Mobile Devices

- Smartphones
- Tablet PCs
- Digital cameras
- Wearable devices
- Portable audio devices
- Navigation equipment



Smartphone



Wearables



Portable Navigation

# SlimStack Board-to-Board Connectors, 0.40mm Pitch, HRF Series



## Specifications

### REFERENCE INFORMATION

Packaging: Embossed tape on reel  
Designed In: Millimeters  
RoHS: Yes  
Halogen Free: Low-halogen

### ELECTRICAL

Voltage (max.): 50V  
Current (max.): 0.3A per circuit  
Contact Resistance (max.): 80 milliohms  
Dielectric Withstanding Voltage: 250V AC  
Insulation Resistance (min.): 100 Megohms

### MECHANICAL

Durability (max.): 30 cycles

### PHYSICAL

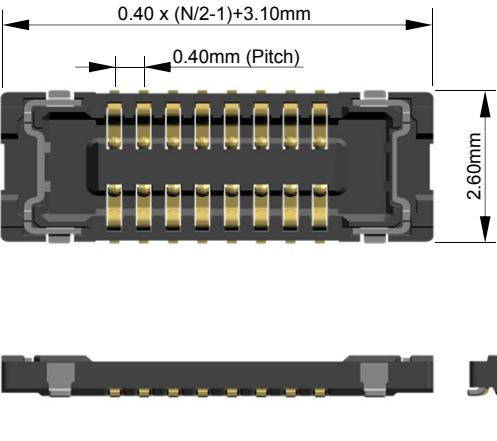
Housing: LCP, UL94V-0, Black  
Contact: Copper Alloy  
Plating:  
Contact Area – Gold  
Solder Tail Area – Gold  
Underplating – Nickel  
Operating Temperature: -40 to +85°C

## Dimensions

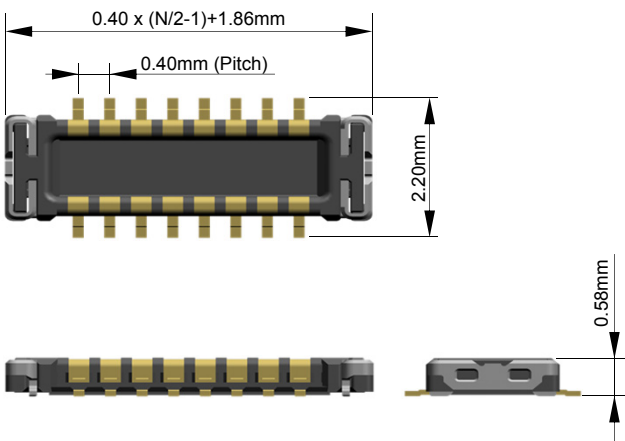
\* Refer to drawing for detail dimension

N: Circuit Size

### Receptacle



### Plug



## Ordering Information

| Order No.   |             | Mated Height (mm) | Mated Width (mm) | Circuits              |
|-------------|-------------|-------------------|------------------|-----------------------|
| Receptacle  | Plug        |                   |                  |                       |
| 503548-**22 | 503552-**22 | 0.70              | 2.60             | 6, 10, 12, 14, 16, 18 |

\*\* : Circuit Size

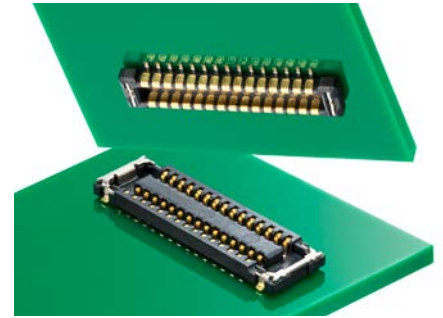


# SlimStack Board-to-Board Connectors, 0.40mm Pitch, B8 Series

**molex**

**0.40mm pitch, 0.80mm height, SlimStack B8 connectors with CleanPoint contact design have robust features that remove contaminants and prevent damage when subjected to harsh handling.**

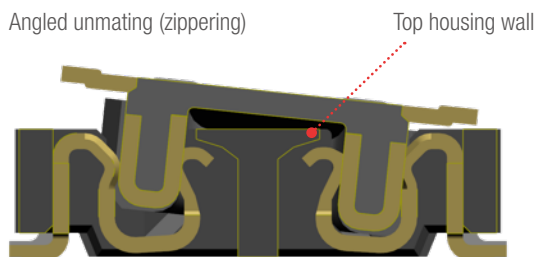
As future devices continue to increase in value and complexity, designers need to stabilize connections to avoid the need for costly rework and/or repair. Building reliability into connector designs for any devices is critical. In the production process of flex-to-board jumpers, flux or dust can sometimes settle on contacts and disrupt signal continuity. Molex's B8 series includes a CleanPoint contact design with a beveled shape that can remove flux and other contaminants to provide a more stable electrical signal.



## Features and Advantages

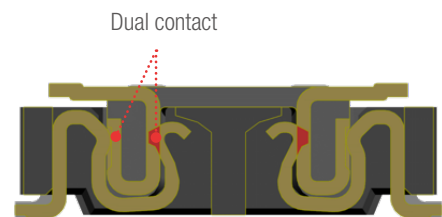
### Top Housing Wall

Top housing wall (stopper) prevents the terminal from lifting up due to "zippering" or angled unmating



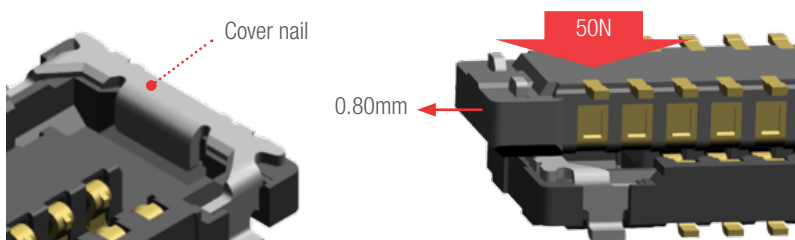
### Dual-Contact Design

A dual-contact design on Molex's SlimStack B8 series absorbs drop-shock discontinuity to help guarantee that a stable signal is maintained even when the device is subjected to rough handling



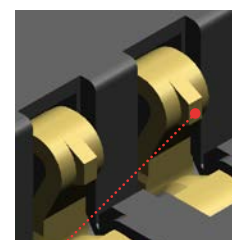
### Cover Nail

Cover nail protects the housing from damage during blind mating or angled unmating (zippering). Mating tests on the outer wall of Molex's B8 connectors demonstrate no damage to housing with up to 50N of force and 0.80mm displacement



### SlimStack B8 CleanPoint Contact

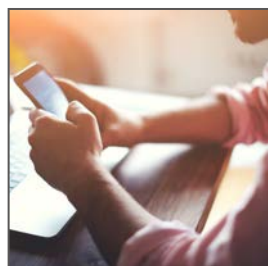
Molex's CleanPoint contact design provides superior electrical reliability and removes foreign materials such as flux



## Applications

### Mobile Devices

- Smartphones
- Tablet PCs
- Wearable Devices
- Portable Audio
- Portable Navigation Equipment



Smartphone



Wearables



Portable Navigation

SlimStack Board-to-Board  
Connectors, 0.40mm Pitch,  
B8 Series

molex

Specifications

REFERENCE INFORMATION

Packaging: Embossed Tape on Reel  
Designed In: Millimeters  
RoHS: Yes  
Halogen Free: Low-Halogen

ELECTRICAL

Voltage (max.): 50V  
Current (max.): 0.3A per circuit  
Contact Resistance (max.): 80 milliohms  
Dielectric Withstanding Voltage: 250V AC  
Insulation Resistance (min.): 100 Megohms

MECHANICAL

Durability (max.): 30 cycles

PHYSICAL

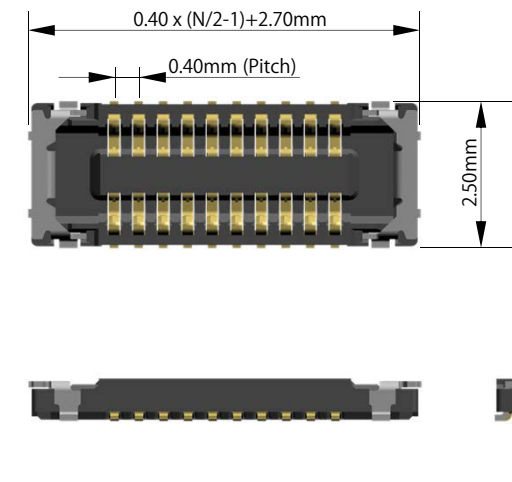
Housing: LCP, UL94V-0, Black  
Contact: Copper Alloy  
Plating:  
    Contact Area – Gold  
    Solder Tail Area – Gold  
    Underplating – Nickel  
Operating Temperature: -40 to +85°C

Dimensions

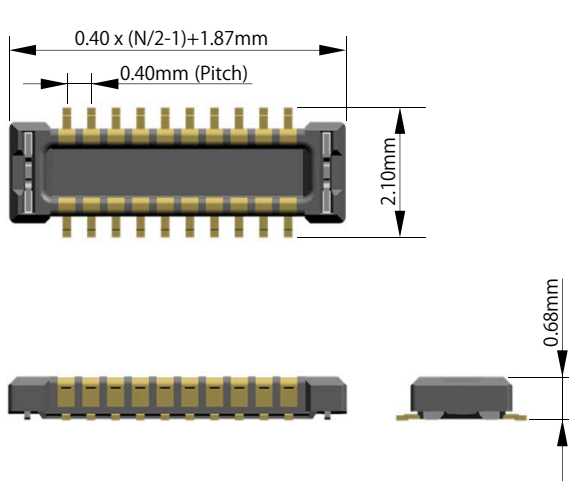
\* Refer to drawing for detail dimension

N: Circuit Size

Receptacle



Plug



Ordering Information

| Order No.    |              | Mated Height (mm) | Mated Width (mm) | Circuits                       |
|--------------|--------------|-------------------|------------------|--------------------------------|
| Receptacle   | Plug         |                   |                  |                                |
| 505550-**-20 | 505551-**-20 | 0.80              | 2.50             | 10, 16, 20, 24, 30, 34, 40, 50 |

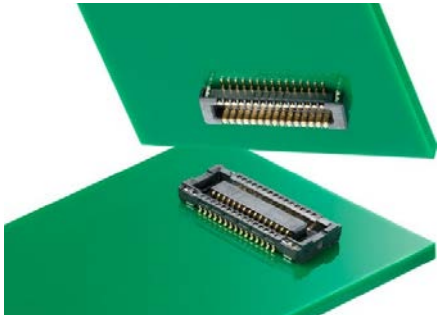
\*\*- Circuit Size

# SlimStack Board-to-Board Connectors, 0.40mm Pitch, J-Bend Series



SlimStack 0.40mm pitch high-speed board-to-board connectors offer a wide variety of circuit sizes and stack heights for space-saving and design flexibility in a diverse range of applications for consumer, datacom, home appliance, mobile and medical industries.

General market and any industry request for quick sample availability and wide variety of selection. 0.40mm pitch J-Bend series have circuit size from 10 to 100. In addition, stack heights for this series is from 1.50mm to 2.30mm with same foot pattern. Molex Micro Solution design provide any solution to solve any market requirement.



## Features and Advantages

**Contact terminal lock**  
Realizes high retention force

**J-Bend structure**  
Provides space saving

51338 J-Bend receptacle

**Audible click on mating**  
Provides contact assurance

55909 J-Bend plug

**Long wipe length**  
Delivers high contact reliability

**In-house contact structure**  
Improved reliability against external shock. Protection from droplets of flux

## Applications

### Consumer

- Game Machine
- Security

### Home Entertainment

- DVC/DSC
- Flat Panel

### Smart Phones and Mobile Devices

- Mobile
- Wearables
- POS

### Data/Computing

- Tablet PC

### Data Center Solution

- Network Server

### Medical

- Patient monitors

Wide range of circuit sizes (10 to 100) and height variations  
Offers design flexibility

- 1.50mm (Plug 55909/ Receptacle 51338)
- 1.80mm (Plug 55909/ Receptacle 500913)
- 2.00mm (Plug 501745/ Receptacle 51338)
- 2.30mm (Plug 501745/ Receptacle 500913)

| LINE UP Combination |              |              |              |              |
|---------------------|--------------|--------------|--------------|--------------|
| Series Number       | Receptacle   |              | Plug         |              |
|                     | 51338        | 500913       | 55909        | 501745       |
|                     |              |              |              |              |
| Circuit             | 10 to 100    | 24 to 100    | 10 to 120    | 12 to 80     |
| Mated Height (mm)   | 1.50 to 2.00 | 1.80 to 2.30 | 1.50 to 1.80 | 2.00 to 2.30 |



Medical



Gaming Machine



Tablet PC



Network Server

# SlimStack Board-to-Board Connectors, 0.40mm Pitch, J-Bend Series



## Specifications

### REFERENCE INFORMATION

Packaging: Embossed Tape on Reel  
Designed In: Millimeters  
RoHS: Yes  
Halogen: Low-Halogen

### ELECTRICAL

Voltage (max.): 50V  
Current (max.): 0.3A per circuit

### MECHANICAL

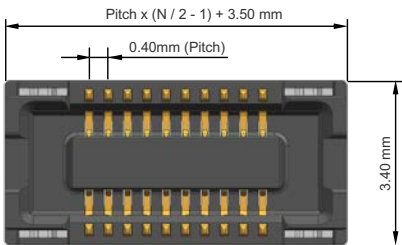
Pitch: 0.40mm  
Mated Height (mm): 1.50, 1.80, 2.00, 2.30  
Width: 3.40mm / 4.20mm  
Length (mm):  $0.40 \times (N/2 - 1) + 3.5$   
Wipe Length: 0.45mm  
Structure Type: Vertical type  
Circuit Size: 10 to 100  
Durability (max.): 30 cycles

### PHYSICAL

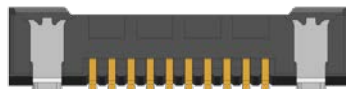
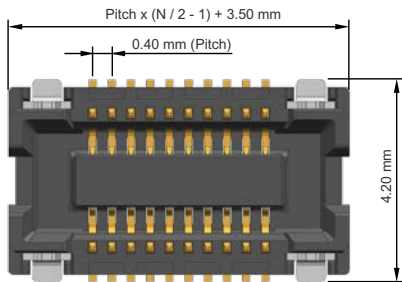
LCP, UL94V-0, Black  
Contact: Copper Alloy  
Plating:  
Contact Area – Selective Gold  
Fitting Nail Area – Selective Gold  
Underplating – Nickel  
Operating Temperature: -25 to +85°C

## Dimensions

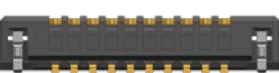
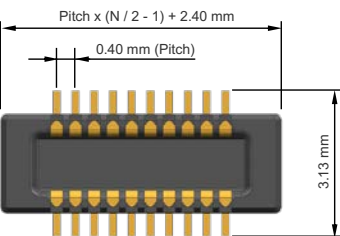
### 51338 Series



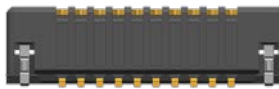
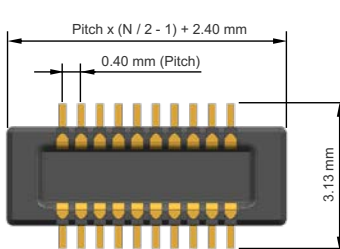
### 500913 Series



### 55909 Series



### 501745 Series



N : Circuit Size

## Ordering Information

| Mated Height (mm) | Width (mm) | Series No. |        | Circuit Size |
|-------------------|------------|------------|--------|--------------|
|                   |            | Receptacle | Plug   |              |
| 1.50              | 3.40       | 51338      | 55909  | 10 to 100    |
| 1.80              | 4.20       | 500913     | 55909  | 24 to 100    |
| 2.00              | 3.40       | 51338      | 501745 | 12 to 80     |
| 2.30              | 4.20       | 500913     | 501745 | 40 to 70     |

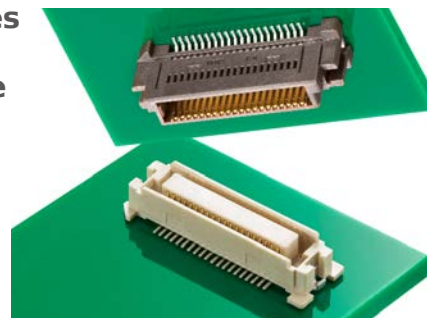


# SlimStack Board-to-Board Connectors, 0.635mm Pitch Series

**molex**

**SlimStack Board-to-Board Connectors 0.635mm Pitch Series offers a wide variety of circuit sizes and various stack heights for space savings and design flexibility in a diverse range of applications.**

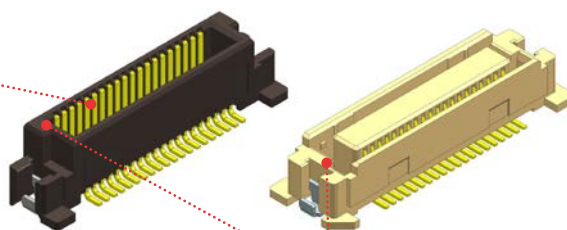
0.635mm Pitch Series has circuit sizes from 20 to 240. In addition, stack heights for this series is from 6.00mm to 16.00mm with same footprint. Molex Micro Solution design provides solutions for any market requirement.



## Features and Advantages






**Long Effective Mating Length**

Removes foreign matter



**Mating Guide Key**

Accurate mating without right and left reversal

| Lineup Combination |   |   |   |  |   |   |
|--------------------|---|---|---|--|---|---|
| Series No.         | Receptacle  | Plug  |   |  |   |   |
|                    | 52885   | 55091   | 53625   | 53647  | 53649   | 53627   |
|                    |  |  |  |  |  |  |
| Circuits           | 20 to 240   | 20 to 200   | 20 to 240   | 20 to 160  | 30 to 140   | 20 to 200   |
| Mated Height (mm)  | 6.00 to 10.00   | 6.00  | 7.00  | 8.00   | 9.00  | 10.00   |
| Series No.         | Receptacle  | Plug  |   |  |   |   |
|                    | 52901   | 55091   | 53625   | 53647  | 53649   | 53627   |
|                    |  |  |  |  |  |  |
| Circuits           | 20 to 200   | 20 to 200   | 20 to 200   | 20 to 160  | 30 to 140   | 20 to 200   |
| Mated Height (mm)  | 12.00 to 16.00  | 12.00   | 13.00   | 14.00  | 15.00   | 16.00   |

## Applications

### Automotive

Car Radar  
Car Infotainment

### Datacom

Servers  
Office Equipment

### Industry

Automation Machines

### Medical

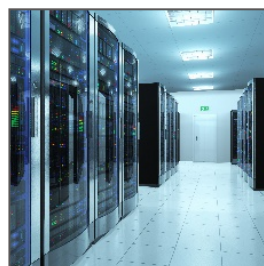
Patient Monitors  
Ultrasound Monitors

### Home Appliance

Digital Electronics



Car Infotainment



Servers



Automation Machine



# SlimStack Board-to-Board Connectors, 0.635mm Pitch Series

**molex**

## Specifications

### REFERENCE INFORMATION

Packaging: Embossed Tape with Cover on Reel  
Designed In: Millimeters  
RoHS: Yes  
Halogen Free: Low-Halogen  
(52885/52901/55091 series only)

### ELECTRICAL

Voltage (max.): 100V  
Current (max.): 0.5A per circuit  
Contact Resistance (max.): 40 to 70 milliohms  
(varied by each part)  
Dielectric Withstanding Voltage: 250V AC  
Insulation Resistance (min.): 1000 Megohms

### MECHANICAL

Durability (max.): 50 cycles

### PHYSICAL

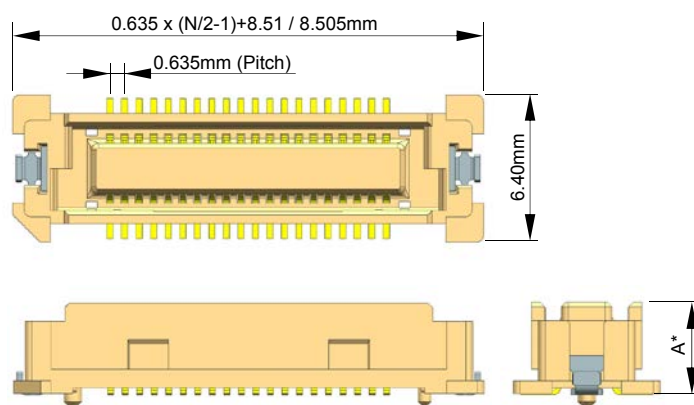
Housing:  
Receptacle: LCP, UL-94V-0, White  
Plug: LCP, UL-94V-0, Brown or Black  
Contact: Copper Alloy  
Fitting Nail: Copper Alloy  
Plating:  
Contact Area – Gold  
Solder Tail Area – Tin  
Underplating – Nickel  
Operating Temperature: -55 to +105°C

## Dimensions

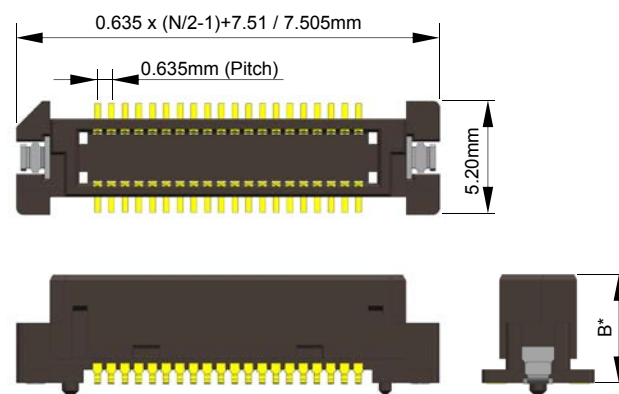
\* Refer to drawing for detail dimension

N: Circuit Size

### Receptacle



### Plug



## Ordering Information

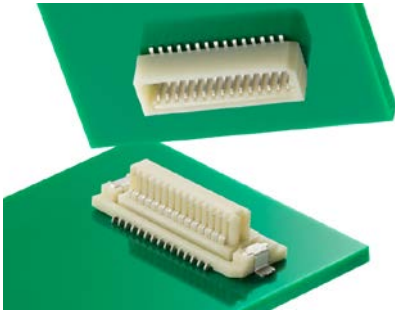
| Order No.   |             | Mated Height (mm) | Mated Width (mm) | Circuits  |
|-------------|-------------|-------------------|------------------|-----------|
| Receptacle  | Plug        |                   |                  |           |
| 52885-**-74 | 55091-**-74 | 6.00              | 6.40             | 20 to 200 |
|             | 53625-**-74 | 7.00              |                  | 20 to 240 |
|             | 53647-**-74 | 8.00              |                  | 20 to 160 |
|             | 53649-**-74 | 9.00              |                  | 30 to 140 |
|             | 53627-**-74 | 10.00             |                  | 20 to 200 |
|             |             |                   |                  |           |
| 52901-**-74 | 55091-**-74 | 12.00             |                  | 20 to 200 |
|             | 53625-**-74 | 13.00             |                  | 20 to 200 |
|             | 53647-**-74 | 14.00             |                  | 20 to 160 |
|             | 53649-**-74 | 15.00             |                  | 30 to 140 |
|             | 53627-**-74 | 16.00             |                  | 20 to 200 |
|             |             |                   |                  |           |

\*\* : circuit size

# SlimStack Board-to-Board Connectors, 0.80mm Pitch, Floating Series



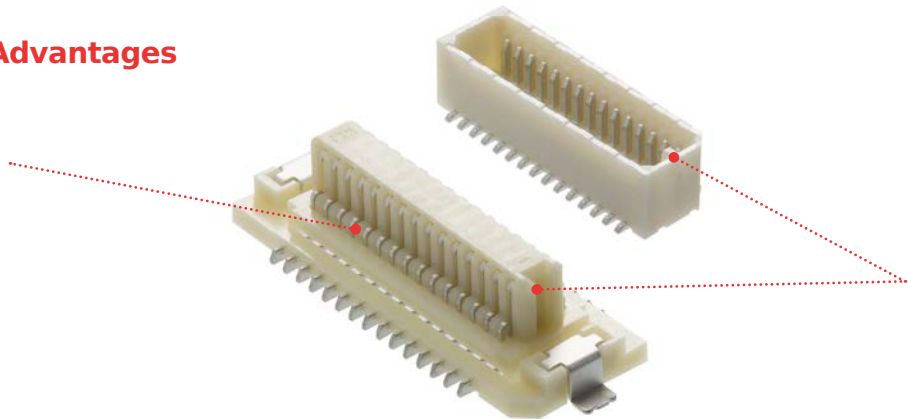
SlimStack B-to-B Connectors 0.80mm Pitch feature floating structure for user-friendliness of assembly process. The connectors have height variation and two kinds of mating directions for design flexibility. In addition, there are compatible receptacles to support many applications.



0.80mm Pitch Floating Series has a floating structure range of  $\pm 0.30\text{mm}$ . There are stack height variations from 5.50mm to 8.00mm with same footprint. Customers can select mating direction, and they also select floating or rigid type to meet their design. Molex Micro Solution design provides solutions to solve any market requirement.

## Features and Advantages

**Floating Structure**  
Reduces PWB gap.  
Facilitates assembly in the event of misalignment or blind joining



**Mating Guide Key**  
Accurate mating without right and left reversal

| Lineup Combination |              |       |       |       |       |
|--------------------|--------------|-------|-------|-------|-------|
| Floating Type      | Receptacle   | Plug  |       |       |       |
|                    | 52588        | 53307 | 53364 | 53353 | 53309 |
|                    |              |       |       |       |       |
| Mated Height (mm)  | 5.50 to 8.00 | 5.50  | 7.00  | 8.00  | 6.65  |
| Rigid Type         | Receptacle   | Plug  |       |       |       |
|                    | 52465        | 53307 | 53364 | 53353 | 53309 |
|                    |              |       |       |       |       |
| Mated Height (mm)  | 4.50 to 7.00 | 4.50  | 6.00  | 7.00  | 5.65  |

## Applications

### Automotive

Car Infotainment

### Consumer

Smart Speakers

Home Appliances

### Datacom

Servers

Office Equipment

### Industrial

Automation Machines



Car Infotainment



Smart Speaker



Office Equipment

# SlimStack Board-to-Board Connectors, 0.80mm Pitch, Floating Series

Specifications

REFERENCE INFORMATION

Packaging: Embossed Tape on Reel  
Designed In: Millimeters  
RoHS: Yes  
Halogen Free: No

ELECTRICAL

Voltage (max.): 50V  
Current (max.): 0.5A per circuit  
Contact Resistance (max.):  
    40 milliohms (mate with 52588 series)  
    20 milliohms (mate with 52465 series)  
Dielectric Withstanding Voltage (min.): 500V AC  
Insulation Resistance (min.): 100 Megohms

MECHANICAL

Mating Force (max.):  
    refer to product specification  
Un-mating Force (min.):  
    refer to product specification  
Durability (max.): 30 cycles

PHYSICAL

Housing: PA, UL-94V-0  
Contact: Copper Alloy  
Plating:  
    Contact Area – Refer to ordering information  
    Solder Tail Area – Refer to ordering information  
    Underplating – Nickel  
Operating Temperature: -40 to +105°C

Dimensions

Refer to drawing for detail dimension

Ordering Information

| Structure     | Order No.  |            | Mated Height (mm) | Mated Width (mm) | Orientation | Boss         |              | Plating | Circuits   |
|---------------|------------|------------|-------------------|------------------|-------------|--------------|--------------|---------|--|
|               | Receptacle | Plug       |                   |                  |             | Receptacle   | Plug         |         |  |
| Floating Type | 52588-**75 | 53307-**71 | 5.50              | 7.20             | Vertical    | Without Boss | Without Boss | Tin     | 18, 20, 30   |
|               |            | 53364-**70 | 7.00              |                  |             |              | With Boss    |         |  |
|               |            | 53364-**71 |                   |                  |             |              | Without Boss |         |  |
|               |            | 53353-**71 | 8.00              | Without Boss     |             |              |              |         |  |
|               |            | 53309-**70 | 6.65              | 4.70             | Right Angle |              | Without Boss |         |  |
|               |            | 53309-**71 |                   |                  |             |              | With Boss    |         |  |
| Rigid Type    | 52465-**70 | 53364-**70 | 6.00              | 7.20             | Vertical    | With Boss    | With Boss    | Tin     | 10, 12, 20, 28, 30, 36, 40                             |
|               |            | 53309-**71 | 5.65              | 4.70             | Right Angle |              |              |         | 20, 24, 26, 28, 30, 40                                 |
|               | 52465-**71 | 53307-**71 | 4.50              | 7.20             | Vertical    | Without Boss | Without Boss |         | 10, 12, 14, 16, 18, 20, 22, 24, 26, 28, 30, 36, 40     |
|               |            | 53364-**71 | 6.00              |                  |             |              |              |         | 18, 20, 30, 36   |
|               |            | 53353-**71 | 7.00              |                  |             |              |              |         | 10, 16, 18, 20, 28, 30, 40                             |
|               |            | 53309-**70 | 5.65              | 4.70             | Right Angle |              |              |         | 10, 12, 14, 16, 18, 20, 22, 24, 26, 28, 30, 32, 36, 40 |
|               |            | 52465-**62 | 53309-**62        |                  |             |              |              | 5.65    | Gold   |

\*\* : circuit size

- Алматы (7273)495-231  
Ангарск (3955)60-70-56  
Архангельск (8182)63-90-72  
Астрахань (8512)99-46-04  
Барнаул (3852)73-04-60  
Белгород (4722)40-23-64  
Благовещенск (4162)22-76-07  
Брянск (4832)59-03-52  
Владивосток (423)249-28-31  
Владикавказ (8672)28-90-48  
Владимир (4922)49-43-18  
Волгоград (844)278-03-48  
Вологда (8172)26-41-59  
Воронеж (473)204-51-73  
Екатеринбург (343)384-55-89
- Иваново (4932)77-34-06  
Ижевск (3412)26-03-58  
Иркутск (395)279-98-46  
Казань (843)206-01-48  
Калининград (4012)72-03-81  
Калуга (4842)92-23-67  
Кемерово (3842)65-04-62  
Киров (8332)68-02-04  
Коломна (4966)23-41-49  
Кострома (4942)77-07-48  
Краснодар (861)203-40-90  
Красноярск (391)204-63-61  
Курск (4712)77-13-04  
Курган (3522)50-90-47  
Липецк (4742)52-20-81  
Россия +7(495)268-04-70
- Магнитогорск (3519)55-03-13  
Москва (495)268-04-70  
Мурманск (8152)59-64-93  
Набережные Челны (8552)20-53-41  
Нижний Новгород (831)429-08-12  
Новокузнецк (3843)20-46-81  
Ноябрьск (3496)41-32-12  
Новосибирск (383)227-86-73  
Омск (3812)21-46-40  
Орел (4862)44-53-42  
Оренбург (3532)37-68-04  
Пенза (8412)22-31-16  
Петрозаводск (8142)55-98-37  
Псков (8112)59-10-37  
Пермь (342)205-81-47  
Казахстан +7(7172)727-132
- Ростов-на-Дону (863)308-18-15  
Рязань (4912)46-61-64  
Самара (846)206-03-16  
Санкт-Петербург (812)309-46-40  
Саратов (845)249-38-78  
Севастополь (8692)22-31-93  
Саранск (8342)22-96-24  
Симферополь (3652)67-13-56  
Смоленск (4812)29-41-54  
Сочи (862)225-72-31  
Ставрополь (8652)20-65-13  
Сургут (3462)77-98-35  
Сыктывкар (8212)25-95-17  
Тамбов (4752)50-40-97  
Тверь (4822)63-31-35  
Киргизия +996(312)96-26-47
- Тольятти (8482)63-91-07  
Томск (3822)98-41-53  
Тула (4872)33-79-87  
Тюмень (3452)66-21-18  
Ульяновск (8422)24-23-59  
Улан-Удэ (3012)59-97-51  
Уфа (347)229-48-12  
Хабаровск (4212)92-98-04  
Чебоксары (8352)28-53-07  
Челябинск (351)202-03-61  
Череповец (8202)49-02-64  
Чита (3022)38-34-83  
Якутск (4112)23-90-97  
Ярославль (4852)69-52-93